



Light it. Load it. Tow it.

Why Was Wireless Trailer Board Created?

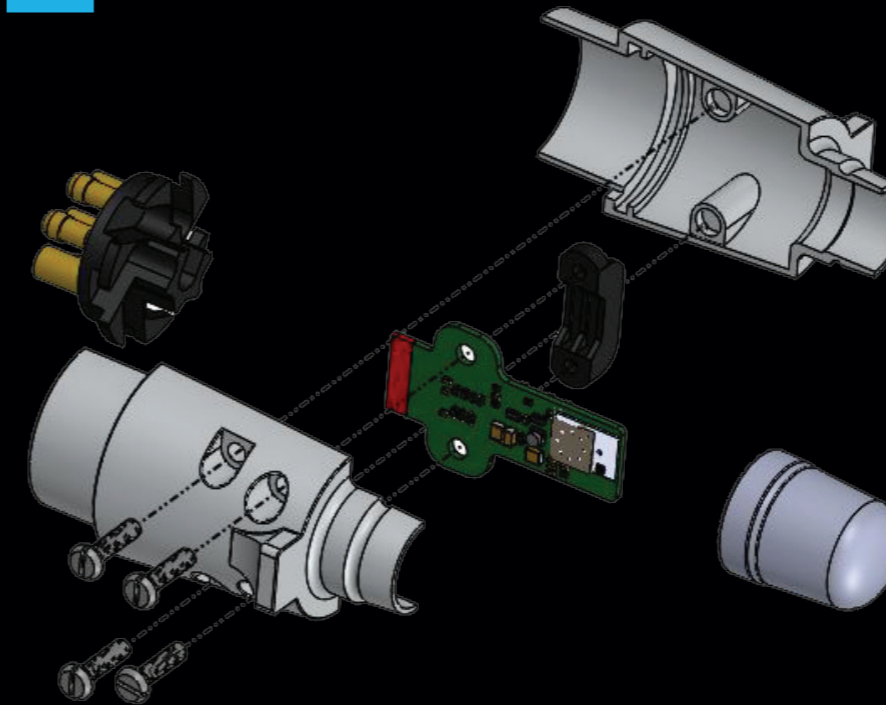


Original ADS have designed and developed a bespoke wireless trailer board kit that eliminates the problems associated with conventional trailer board methods, providing users with a **safer** and **smarter** alternative.

The **Wireless Trailer Board** significantly increases visibility when towing and preparing to tow a vehicle. Our trailer board has experienced mass adoption across some of the world's most respected fleets.



Why is Our Kit Unique?



Operates on all commercial vehicles
All modern vehicles operate different electronic signals. Other wireless trailer board kits on the market can cause vehicle warning lights to appear on the vehicle dash system when the equipment is used.

No false light warnings on vehicle dash
Our design and development team has conducted extensive testing to eliminate the typical problem of vehicle warning lights falsely appearing on the patrol vehicle dashboard.

Different kit configurations
The kit is available as an aftermarket fitment and a bodybuilder's kit. Users, therefore, have the option to house the transmitter inside the patrol vehicle to keep it dry and protected from the weather.*

* See [Wireless Trailer Board Configurations](#) page.

Problems with Conventional Trailer Boards: Safety Issues



When a patrol concludes that a vehicle needs towing, the patrol has to move from their safety position to in front of the casualty vehicle, where the view of the patrol vehicle is compromised, leaving the casualty vehicle vulnerable to collision.

The visibility of the patrol vehicle is compromised further when the casualty vehicle is the same or similar height as the patrol vehicle. Therefore, as the patrol vehicle moves to deploy the trailer and complete the tow, the bright chevrons and flashing lights on the patrol vehicle may not be visible to oncoming traffic.



How Does the Original ADS Wireless Trailer Board Enhance Safety Measures?



Wireless Trailer Board enables the patrol to equip the casualty vehicle with the trailer board already imitating the patrol vehicle lights before the patrol vehicle moves from behind the casualty vehicle. Therefore, oncoming traffic can see the rear end of the casualty vehicle and avoid a collision before the patrol vehicle moves from the safety position. The trailer board will be illuminated throughout the towing process, from deploying the trailer, loading the casualty vehicle and when the patrol vehicle drives away.



Problems with Conventional Trailer Boards: Bulky Cables



Friction from the cables laid over casualty vehicles can cause wear and damage to the paintwork, leaving a bad company reputation and being liable to claims.

If customers claim, depending on many factors, including the extent of the vehicle damage and type of vehicle paint, liability costs are typically £250+. These claims cause an unnecessary expenditure as well as a damaged reputation.

Furthermore, 7/13 pin core cables can slip and drag along the road, causing damage to the cable. The damaged cables can cause the trailer lights to fail, raising additional safety concerns. For example, faulty trailer boards and a dragging cord can cause traffic incidents.



How Does Wireless Trailer Board Stop Problems Caused by Bulky Cables?



As our **Wireless Trailer Board** kit uses Bluetooth technology to transmit the signals and has been designed for durability and reliability, it eliminates the problem of having bulky cables.

Our **Wireless Trailer Board** is safer, more innovative, and more reliable.



Wireless Trailer Board Configurations



1. In-built vehicle mount

To keep the transmitter dry and protected from the weather, we have designed a durable, purpose-built plastic case with the transmitter socket, which has an on/off switch that you can fit anywhere inside the vehicle.

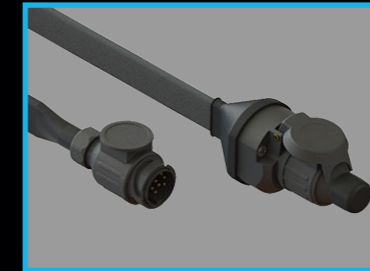


This setup has vehicle-specific looms and sockets, so the installation is a simple *plug-and-play*.



2. Fly lead

One end plugs into the vehicle trailer socket. The user then shuts the other end (where the transmitter is installed) into the back of the patrol vehicle.



3. Standard

13-pin plastic transmitter fixed into the vehicle trailer socket and is internally potted to help withstand the external environment.

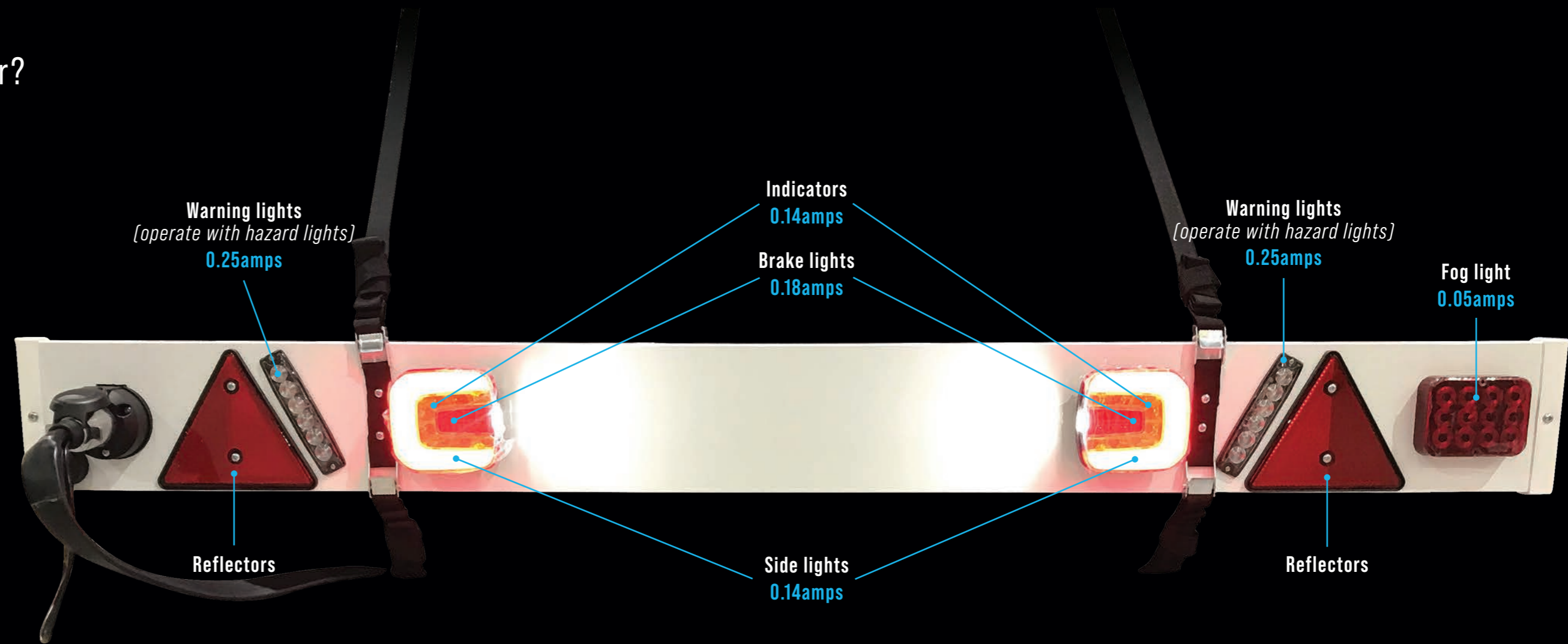


How Long Does the Battery-Operated Receiver Run For?



When fully charged and with all lights running simultaneously, the 3Ah battery can power an LED trailer board for up to 4 hours. The 5Ah battery can provide up to 6 hours of power with all lights running at the same time.

We can modify the battery holder on the receiver box if different batteries are required (depending on the volume). Please visit our website or contact us for further information on power consumption.



Technical Specifications Pin Information



Pinout for 13-pin wireless trailer board

1. Left indicator
2. Fog
3. Earth
4. Right indicator
5. Right side light
6. Brake
7. Left side light
8. Not used
9. Not used
10. Not used
11. Not used
12. Warning flashers
13. Not used



Accessories Trailer Board



Accessories D20 Battery and Battery Car Charger



The receiver battery holder has been designed and developed for the Draper D20 range. Other batteries can be used with design modifications. Speak to the team at Original if this is of interest.



Accessories 7 to 13 Pin Adapter



“ It’s not a *want* bit of kit. It’s a *NEED* bit of kit! It makes it so much easier to fit everything. ”

RAC Patrol

originalADS

Unit 52 Atcham Business Park | Shrewsbury | SY4 4UG | United Kingdom
Call +44 (0)345 5050 222 | sales@originaldesign.com | www.originalads.co.uk